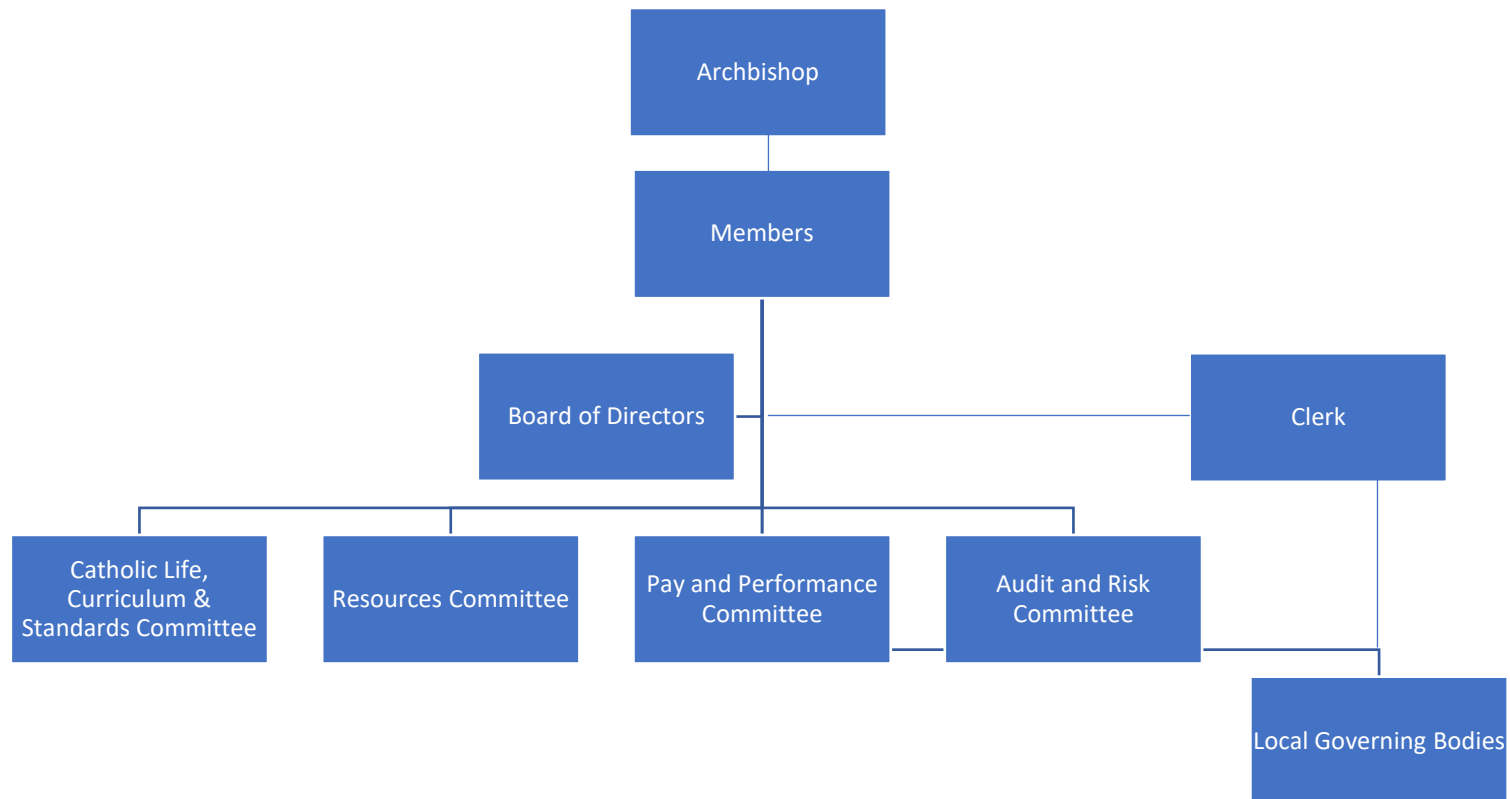


Governance Structure and Lines of Accountability 2020/2021



Board of Directors: Sub-Committee Checklist

The purpose of sub-committees is to hold to account and constructively challenge the MAC Executive Team as to the effectiveness and impact of policy, proposals, and practice in relation to the management and deployment of MAC resources. Assurances to the MAC with as to high performance expectations within all schools, including ensuring that each school is promoting and upholding the MAC's vision, values and ethos expectations in accordance with the Our Lady and All Saints Catholic Multi Academy Company Strategic Plan. (**LGB Sub-Committees to be added later*).

Catholic Life, Curriculum & Standards Sub-Committee	Resources Sub-Committee	Pay and Performance Management Sub-Committee	Audit and Risk Sub-Committee
Admissions Assessment Benchmarking Data Catholic Education (incl. Chaplaincy) Continuing Professional Development Curriculum (incl. Integrated Curriculum Financial Planning) Diocesan Canonical Inspections Educational Visits Extra-Curricular Activities Leadership & Management Ofsted/External Scrutiny Pupil Outcomes, Attainment and Progress Pupil Premium Pupil Welfare, Behaviour, Exclusions and Attendance Quality Assurance	Asset Management Plan Branding Business Continuity Planning Benchmarking Data Communication (internal and external stakeholders) Estates Management (incl. Lettings) Financial Sustainability Grant Opportunities Health and Safety Information Technology Insurances HR Strategy & Organisation Performance (incl. staffing appointments) Legal Overview of MAC and School Policies Pupil Numbers	Performance Appraisals Salary Awarding Staff Terms and Conditions of Employment Compromise Agreement Approval (above £10,000)	Compliance Ethics and Probity External and Internal Audit Governance (<i>following any directives issued by the Archdiocese of Birmingham</i>) Risk Management

<p>Safeguarding School Improvement SEND Single Central Record Term Dates/Holidays/Inset Days Transition to Secondary School</p>			
<p><u>Policy Lead:</u> Admissions Assessment Attendance (Pupil) Child Protection Continuing Professional Development Quality Assurance Safeguarding SEND</p>	<p><u>Policy Lead:</u> Branding & Communications Complaints Finance GDPR Health and Safety HR (incl. Safer Recruitment) Information Technology Investment Lettings Procurement & Contracts</p>	<p><u>Policy Lead:</u> Salary Scales Pay Awards Pay Policies Contracts of Employment (terms and conditions)</p>	<p><u>Policy Lead:</u> Audit Compliance Risk Management Whistleblowing</p>

	MAC Members	MAC Board of Directors	Director Sub-Committees (MAC Sub-Committee)	Local Governing Bodies (MAC Sub-Committee)
Accountable to	Archbishop, Diocesan Trustees, ESFA, DfE, Charities Commission, Companies House	Archbishop, Members, ESFA, DfE, Charities Commission, Companies House	Archbishop, Board of Directors	Archbishop, Board of Directors
Authority derived from	Archbishop, ESFA, DfE through Memorandum of Association between CES and DfE	Articles and Scheme of Delegation, Master Funding Agreement, Director Code of Conduct	Scheme of Delegation/Terms of Reference, Director Code of Conduct	Scheme of Delegation/Terms of Reference reviewed annually, Supplemental Funding Agreement, Code of Conduct for Governors
Reports to	Archbishop, Diocese	Members, Companies House, Charities Commission, ESFA, DfE and Local Authorities	Board of Directors	Board of Directors and/or MAC Sub-Committees (subject to Scheme of Delegation/Terms of Reference), Stakeholders through publication of minutes and external audit report.
Receives reports from	Board of Directors, BDES	MAC Sub Committees, External Scrutiny, Executive Members of the Central Team, BDES, ESFA, DfE	External Scrutiny, Executive Members of the Central Team	Headteacher and those given responsibility for specific areas such as Safeguarding, Standards, etc... (subject to confirmation of centralised functions)
Meeting Schedule	Annual	At least three per annum	As required to achieve KPIs	As required to achieve KPIs
Communication Links	Board of Directors, BDES	Members, BDES, Committees/LGB	Board of Directors, LGB	Board of Directors, Local Parish, Community, Parents, PTA